

## Diversity Dynamics and Crisis in Paleontology Speaker Series



by Nussaibah Raja-Schoob & Emma Dunne

N. Raja-Schoob, FAU-GeoZentrum Nordbayern / Paleontology; e-mail: nussaibah.raja.schoob@fau.de

Dr. E. Dunne, University of Birmingham - School of Geography, Earth and Environmental Sciences; e-mail: e.m.dunne@bham.ac.uk

“*Palaeontology is unique among scientific disciplines in that it thrives on the exchange of information across diverse communities, both academic and non-academic... Considering the global challenges of climate change and current diversity crisis, and the perspective palaeobiology can contribute to tackling these challenges, our field cannot afford exclusion of or mistrust by any group.*”

We are excited to present the DDCP online workshop series presented by Nussaibah Raja-Schoob and Emma Dunne! You will find information on the speaks and the schedule and on how to register to participate the talks and the public discussion.

### Schedule (UTC)

Tue Nov 16<sup>th</sup>  
11:00



#### Dr Michael Rivera

**Job title / Affiliation:** Bioarchaeologist and biological anthropologist, Faculty of Education, The University of Hong Kong  
“*We all deserve to study the human past: the current state of bioarchaeology and palaeoanthropology*”

@riveramichael

Fri Nov 19<sup>th</sup>  
16:00



#### Dr Martin Nuñez

**Job title / Affiliation:** Grupo de Ecología de Invasiones, INIBIOMA, CONICET/ Universidad Nacional del Comahue, Argentina  
Associate Professor, Department of Biology and Biochemistry, University of Houston, Texas  
“*Making palaeontology more global: lessons from ecology*”

@Martin\_A\_Nunez

Tue Nov 23<sup>rd</sup>  
11:00

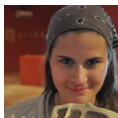


#### Dr Devapriya Chattopadhyay

**Job title / Affiliation:** Associate Professor and Chair, Department of Earth and Climate Science, IISER Pune, India  
“*Paleontological research in India: the colonial past shapes the present and dictates the future*”

@DevapriyaChatt4

Fri Nov 26<sup>th</sup>  
16:00



#### Dr Aline Ghilardi

**Job title / Affiliation:** PostDoc, Departamento de Geologia, Universidade Federal do Rio Grande do Norte (UFRN)  
“*Scientific colonialism in palaeontology: Case studies from Brazil*”

@alinemghilardi

Tue Nov 30<sup>th</sup>  
11:00



#### Dr Estelle Raveloaitiana

**Job title / Affiliation:** Incoming Postdoctoral researcher at Sustainability, Agriculture & Technology Lab, Westlake University, China.  
also affiliated with Dept. of Plant Biology and Ecology, University of Antananarivo, Madagascar, and Agroecology, Department of Crop Sciences, University of Göttingen, Germany

“*Conducting ethical research in ecology that involves local communities - a perspective from a collaborative project in Madagascar*”

@Estelle\_Ravel

Fri Dec 3<sup>rd</sup>  
16:00



#### Dr Luisa Fernanda Echeverría King

**Job title / Affiliation:** International Educator, Servicio Nacional de Aprendizaje (SENA)

“*Cooperation or competition? Towards meaningful scientific projects through horizontal collaborations*”

@Lecheverriaking

Tue Dec 7<sup>th</sup>  
11:00



#### Dr Jansen Smith

**Job title / Affiliation:** PaleoSynthesis PostDoc, FAU, GeoZentrum Nordbayern - Paleontology, Germany

“*Preliminary observations on a global effort to identify research priorities in paleontology*”

@JansenASmith

See you online soon!

### More information

- participation is free
- more details on [DDCP](#) and the [speakers series](#)

### Registration

To participate, please register on following website: [DDCP eventbrite](#)



Nussaibah & Emma



@mauriantales

@emmadnn