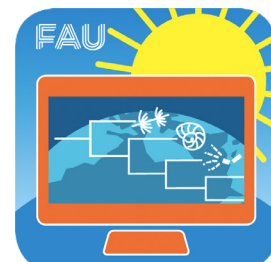





Analytical Paleobiology Workshop '22

Our 1st Summer Science School



 Funded by the Volkswagen Foundation
Prof. W. Kiessling (FAU, Erlangen)
Prof. M. Steinbauer (University Bayreuth)



visit our homepage!
<https://www.paleosynthesis.nat.fau.de/>

Contact us:

general questions: Dr Barbara Seuss (pal-synthesis@fau.de)

scientific questions: Dr Ádám Kocsis (adam.kocsis@fau.de)

 @PaleoSynth

  paleosynthesisproject



The date is set!

The course will take place from **August 22 to September 9, 2022** at the educational center of the Paleontological Institute.

Information on the course

Our Summer School is designed to train young paleontologists in quantitative methods and programming as well as to strengthen methodological exchange.

The Science School builds on the existing Analytical Paleobiology Workshops (APWs). Using the R statistical software we will be focusing on quantitative methods in paleobiology. Key methods we will teach are e.g., diversity dynamics, extinction selectivity, phylogenetics, geometric morphometrics, and species distribution modelling.

The courses will be largely run by local staff. However, we also invite external experts to cover a broad spectrum of topics. **Costs for travel and accommodation will be covered by the project** (you book your travel, hotel is organized by our local team).

Your application

Our initial Summer Science School is targeted towards PhD students, but advanced master students and early career postdocs are also encouraged to apply. Twelve participants can take part in person. Reviewers will rate your application.

Before you submit please visit [APW '22](#) for details.

Deadline to submit: February 28th, 2022

What do you need to apply?

Current research plans - Provide a brief description of current research plans and general research interests.

Background - Include current academic status and institutional affiliation, degrees earned, university / year of graduation, a brief list of relevant classes / workshops taken, self-assessment (proficiency in statistical methods and programming in R and other environments), ability to communicate in English.

Motivation - Explain why the topics addressed by the workshop are of special interest to you and to what extent these subjects are taught at your current academic institution.

Logistical Assistance - Tell us about issues with which you may need assistance (e.g., entry visa to Germany, disabilities, etc.) (maximum 1000 characters including spaces).

Recommendation letter - Indicate the name and email address of the academic advisor who will provide the letter. **Note:** A recommendation letter must be provided by the applicant's academic advisor and uploaded separately.

Important! Although we hope to have escaped the pandemic by August 2022, the situation remains uncertain. Therefore, we will only accept participants who are fully vaccinated with a vaccine that is accepted within the EU (check here: [accepted vaccines](#)).

However, we want to support as many students as possible - so there will also be the chance to join remotely.

The Organizing Committee of the Analytical Paleobiology Workshop 2022